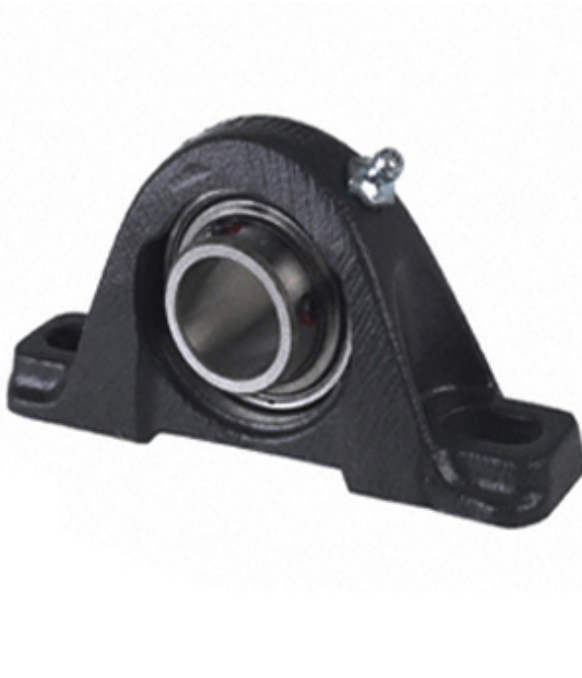




Qingdao XMD Autos Ball Bearing Co., Ltd.



YAK 40 SGT Bearing 2D drawings and 3D CAD models

1.575 Inch | 40 Millimeter x 1.937 Inch | 49.2 Millimeter x 1.937 Inch | 49.2 Millimeter TIMKEN YAK 40 SGT Pillow Block Bearings

Bearing No. YAK 40 SGT

Category	Pillow Block Bearings
Inventory	8.0
Manufacturer Name	TIMKEN
Minimum Buy Quantity	N/A
Weight	2.528
EAN	0087796265318
Product Group	M06110
Number of Mounting Holes	2
Mounting Method	Set Screw
Housing Style	2 Bolt Pillow Block
Rolling Element	Ball Bearing
Housing Material	Cast Iron
Expansion / Non-expansion	Non-expansion
Mounting Bolts	12 Millimeter
Relubricatable	Yes
Insert Part Number	GYE40KRRB
Seals	Double Land Riding Rubber Contact
Housing Configuration	1 Piece Solid
Inch - Metric	Metric
Other Features	Single Row Spherical Normal Duty Low Base Black Housing Powder Coated Epoxy Finish
Long Description	2 Bolt Pillow Block; 40MM Bore; 49.2MM Base to



Qingdao XMD Autos Ball Bearing Co., Ltd.

	Center Height; Set Screw Mount; Ball Bearing; 110.3MM Minimum Bolt Spacing; 162.7MM Bolt Spacing Maximum; Relubricatable; Cast Iron; Double Land Riding R
Category	Pillow Block
UNSPSC	31171511
Harmonized Tariff Code	8483.20.40.40
Noun	Bearing
Keyword String	Pillow Block
Manufacturer URL	http://www.timken.com
Manufacturer Item Number	YAK 40 SGT
Weight / LBS	5.569
Nominal Bolt Center to Center	5.4 Inch 136 Millimeter
B	1.937 Inch 49.2 Millimeter
Bolt Spacing Maximum	6.406 Inch 162.7Millimeter
D	1.937 Inch 49.2 Millimeter
Actual Bolt Center to Center	0 Inch 0Millimeter
d	1.575 Inch 40 Millimeter
Bolt Spacing Minimum	4.343 Inch 110.3Millimeter
Shaft Size d	1.575 in
Bearing Type	Ball Bearing
Inside Ring Outside Diameter	2.058 in
Dimension T	1.016 in
Dimension D1	2.059 in
Series	Industrial
Weight	5.459 lb
Seal Type	Shroud Seal
Base to Center Height H	49.21 mm
Total Length L	179.4 mm



Qingdao XMD Autos Ball Bearing Co., Ltd.

Total Width A	2.031 in
Bolt Hole Spacing J	136.5 mm
Bolt Hole Width N	14.3 mm
Bolt Hole Length N1	26.2 mm
Foot Height H1	19.1 mm
Total Height H2	101.6 mm
Dimension L1	59.8 mm
Inside Ring Width B	=Bearings1_Inside Ring Width= mm
Center of Bearing from End S	19 mm
Dimension B1	1.937 in
Static Load Rating	4460 lbf
Dynamic Load Rating	8130 lbf