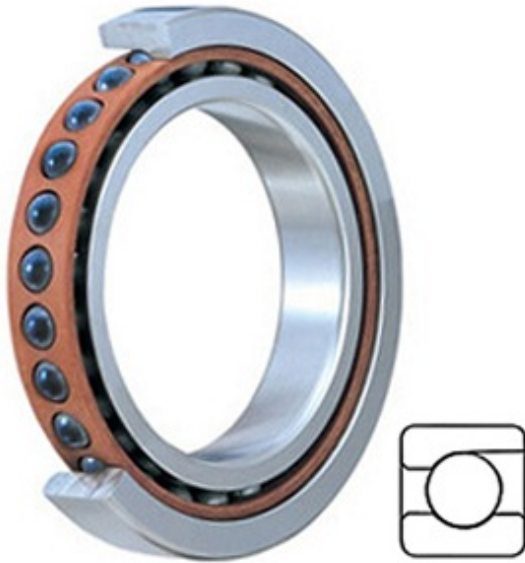




Qingdao XMD Autos Ball Bearing Co., Ltd.



2MMC9115WI SUL Bearing 2D drawings and 3D CAD models

2.953 Inch | 75 Millimeter x 4.528 Inch | 115 Millimeter x 0.787 Inch | 20 Millimeter TIMKEN 2MMC9115WI SUL Precision Ball Bearings

Bearing No. 2MMC9115WI SUL

Category	Precision Ball Bearings
Inventory	0.0
Manufacturer Name	TIMKEN
Minimum Buy Quantity	N/A
Weight	0.64
EAN	0087796331013
Product Group	B04270
Enclosure	Open
Precision Class	ABEC 7 ISO P4
Material - Ball	Ceramic
Number of Bearings	1 (Single)
Contact Angle	15 Degree
Preload	Light
Raceway Style	1 Rib Outer Ring
Cage Material	Phenolic
Rolling Element	Ball Bearing
Mounting Arrangement	Universal
Flush Ground	Yes
Inch - Metric	Metric
Other Features	Single Row Angular Contact Super High Precision Hybrid Corrosion Resistant Ball
Long Description	75MM Bore; 115MM Outside Diameter; 20MM Width; Open Enclosure;



Qingdao XMD Autos Ball Bearing Co., Ltd.

	ABEC 7 ISO P4 Precision; Ceramic Ball Material; 1 (Single) Bearings; 15 Degree Contact Angle; Phenolic Cage Material; 1 Rib Outer Ring
Category	Precision Ball Bearings
UNSPSC	31171531
Harmonized Tariff Code	8482.10.50.28
Noun	Bearing
Keyword String	Angular Contact Ball
Manufacturer URL	http://www.timken.com
Manufacturer Item Number	2MMC9115WI SUL
Weight / LBS	1.41
D	4.528 Inch 115 Millimeter
d	2.953 Inch 75 Millimeter
B	0.787 Inch 20 Millimeter